

**PMC<sup>®</sup>**



**twenty5** 



twenty5.23 in Silk white

# WHAT DRIVES US

At PMC, we believe that music is what really matters; it's what moves us and gives us the passion for what we do.

It's relatively easy to create loudspeakers that colour or flatter music — but that has never been our way. The quest for sonic neutrality and transparency has always been PMC's obsession, using advanced engineering to reproduce music as vividly and faithfully as possible. Our designs are involved in every stage of music-making, from the recording studio to listening at home. From this experience, we know exactly how to present music as transparently as possible, just as the artist intended.

As we like to say, loudspeakers are where science meets art — we take care of the science so you can connect with the art.

# THE SPEAKERS THAT MAKE MUSIC



Artists and institutions who made music with PMC, composing, mixing or mastering with our Emmy-award-winning loudspeakers:

JOHN NEWMAN  
ELBOW  
EMBRACE  
SADE  
STEVIE WONDER  
COLDPLAY  
KRAFTWERK  
PETER GABRIEL  
ROBBIE WILLIAMS  
BRIAN MAY  
MARILLION  
SONY MUSIC  
UNDERWORLD  
TONY BENNETT  
BASEMENT JAXX  
UNIVERSAL MUSIC

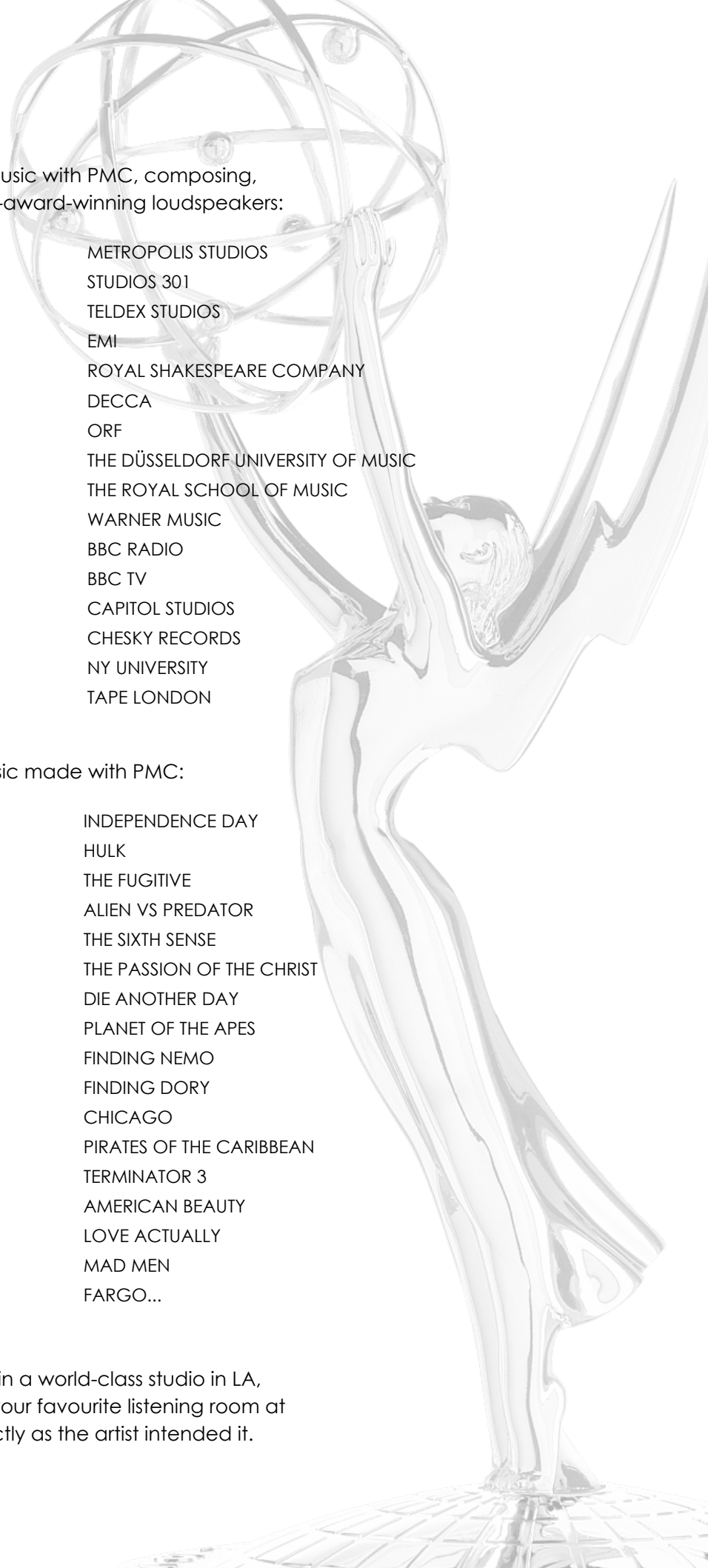
METROPOLIS STUDIOS  
STUDIOS 301  
TELDEX STUDIOS  
EMI  
ROYAL SHAKESPEARE COMPANY  
DECCA  
ORF  
THE DÜSSELDORF UNIVERSITY OF MUSIC  
THE ROYAL SCHOOL OF MUSIC  
WARNER MUSIC  
BBC RADIO  
BBC TV  
CAPITOL STUDIOS  
CHESKY RECORDS  
NY UNIVERSITY  
TAPE LONDON

Just some of the movie and TV music made with PMC:

GAME OF THRONES  
SPECTRE  
SKYFALL  
SAVING MR. BANKS  
MAN OF STEEL  
THE ADJUSTMENT BUREAU  
WALL-E  
INCEPTION  
TRON  
THE DARK KNIGHT  
GRAN TORINO  
DEADPOOL 2  
AVENGERS INFINITY WAR  
WATCHMEN  
DAY OF THE DEAD  
HALLOWEEN  
HANCOCK

INDEPENDENCE DAY  
HULK  
THE FUGITIVE  
ALIEN VS PREDATOR  
THE SIXTH SENSE  
THE PASSION OF THE CHRIST  
DIE ANOTHER DAY  
PLANET OF THE APES  
FINDING NEMO  
FINDING DORY  
CHICAGO  
PIRATES OF THE CARIBBEAN  
TERMINATOR 3  
AMERICAN BEAUTY  
LOVE ACTUALLY  
MAD MEN  
FARGO...

Whether you listen to our speakers in a world-class studio in LA, London, Nashville, Tokyo, Berlin or your favourite listening room at home, you will hear the music exactly as the artist intended it.



# *i*MPROVING A LEGEND

PMC's now-legendary **twenty5** series won five-star ratings and awards worldwide, and were chosen to form the reference surround system for What HiFi magazine — the speakers by which all others are judged. But true innovators are never satisfied. Our team never stops looking for ways to hone their designs, using new technologies, materials, or discoveries, including innovations from outside the audio industry. This quest has led to the creation of the new **twenty5i** series speakers — where '*i*' stands for improved. The new range offers everything that made the **twenty5** series so sought-after, but with even greater realism, transparency and musicality.



# INTRODUCING TWENTY5

The **twenty5i** range consists of four two-way loudspeakers ranging from the compact shelf-mounting **twenty5i.21** to the floorstanding **twenty5i.24**, plus the flagship three-way **twenty5i.26**. There's also a Centre channel model and the proven subwoofer for use in surround systems.

Our core belief is that the same ultra-high resolution loudspeaker, if properly designed, can be used throughout the entire recording chain. That's why our designs are employed at every stage of music-making, from film soundtrack composers' music rooms to recording studios through to the home, preserving the essence of the original performance exactly as the artist intended. Because the characteristics and tonality of all our speakers, from large to small, are essentially the same, it's a simple matter to mix and match different models to create your perfect immersive audio system.





# WHY THE

*Toby Ridley is a key member of the research and development team for the **twenty5i** range.*

## **Toby, the twenty5 series was such a success — why change it?**

Since the **twenty5** series was launched, we've carried out a lot of research into improving high-frequency definition in loudspeakers and also into identifying and reducing unwanted vibration, which can colour the sound you hear, making it less realistic and also causing blurred imaging. All of this research helped us hone the design of our flagship, **fenestria**, and also fed into the design of the **twenty5i** range.

## **OK, so what's different?**

We've made changes to further widen the **twenty5** series speakers' already impressive sweet spot, and reduce colouration from unwanted vibration. The floorstanders are mounted on new anti-vibration plinth bars; they acoustically isolate the speakers from the floor, dramatically reducing vibration transmission and preventing unwanted vibrations being retransmitted by the floor and passed back into the loudspeaker. The result is a more vivid, defined and open soundstage, free from smearing with high-frequency focus.

## **Have there been any changes to the twenty5 drivers?**

### **They were already pretty fine...!**

We've incorporated a new tweeter, which was developed from the one in the high-end fact range. The new driver is effectively two drivers in one — you can read more detail about its unique design later in this brochure. It also has a smoother frequency response in the upper registers. Finally, the new driver has a gently curved high-frequency dispersion plate and grille; the plate is made from an extremely rigid glass-fibre composite that further widens the sound field and creates a stable platform for the driver to excel.

## **Apart from the drivers, what else is different?**

We've also modified the crossover on all models in the **twenty5i** range. That's the part of a loudspeaker that divides the audio input, so the high frequencies are only routed to the tweeter, for example. We've lowered the point where audio crosses over from being handled by the tweeter to the bass driver. That means the woofer isn't being pushed to produce frequencies that are too high for it, making the combined output of the drivers wider and more enveloping.

## **If you had to summarise the effect of all these changes, what would you say?**

The **twenty5i** series has an even wider sweet spot with cleaner, more three-dimensional imaging. The first thing that you'll notice is that vocals are more natural and tangible — it really does feel like a live performance.



“

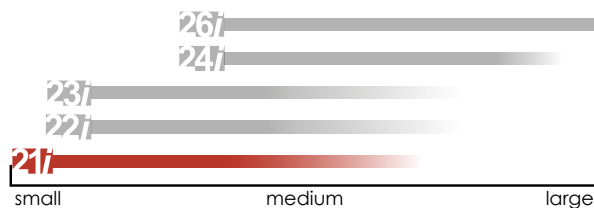
***The twenty5i series has an even wider, more consistent sweet spot, and imaging is cleaner, sharper, more vivid and more three-dimensional.***

”





Although the **twenty5.21i** is the most compact model in the new range, there's nothing small about the sound, which has the impact you'd expect from a much larger cabinet, thanks to PMC's Advanced Transmission Line technology. The speaker is ideal for use in small-to-medium listening environments where space is at a premium, but where you still want detailed bass, ultra-realistic mids and delicate highs with maximum musicality. Equally happy mounted on a stand or a bookshelf, the **twenty5.21i** offers maximum flexibility for placement, and also makes an excellent choice for effects speakers in an immersive sound system.

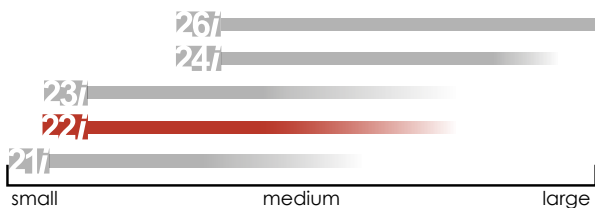


Choosing the right twenty5i model for your room size





The more substantial **twenty5.22i** is designed for use in larger spaces than the **21**, and is equally at home on its dedicated stands, console furniture or other flat surfaces. Its still-trim dimensions belie the lengthy **ATL™** concealed inside, which, coupled with the powerful 6.5-inch **g-weave** bass driver and **Laminair™** vent, allow it to deliver a clean, uncluttered and powerful low-end, together with detailed highs from the newly designed soft-dome treble unit. Despite its increased size, its performance is agile and full of dynamism.



Choosing the right **twenty5i** model for your room size



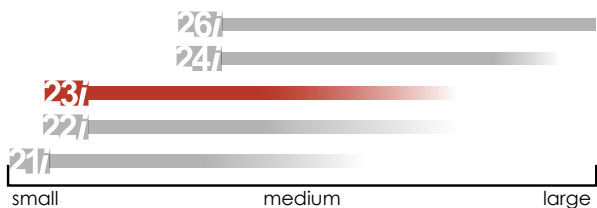


twenty5.22i in Oak

# twenty5 **23i**



The **23** has proved to be the most popular model in our **twenty** and **twenty5** range of speakers, and the **twenty5.23i** looks set to follow their success. Its discreet and elegant floor-standing form is perfect for filling medium-sized rooms with transparent, authentic dynamics and effortlessly extended bass, and it will blend unobtrusively into any room, whether your chosen décor is modern or traditional. As with all of the **twenty5i** range, it will make the best of even affordable source electronics, and, coupled with high-end amplification, will truly excel.



Choosing the right **twenty5i** model for your room size





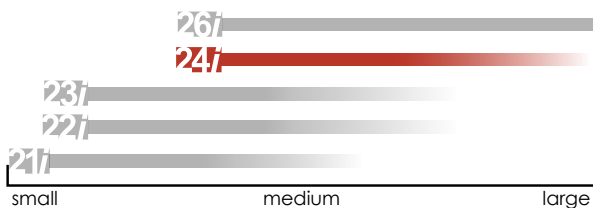




twenty5.24i in Diamond black



The largest two-way speaker in the range, the **twenty5.24i** delivers compelling life-like performances with realism, precision, bite and power. Even in medium-to-large listening rooms, its seamlessly integrated drivers and **ATL™** saturate the space with music, giving you a hi-fidelity experience like no other in a slender and graceful cabinet design that will delight your senses without dominating your room. With the grilles in place, the **twenty5.24i** produces a sound that many could mistake for that of a three-way speaker.



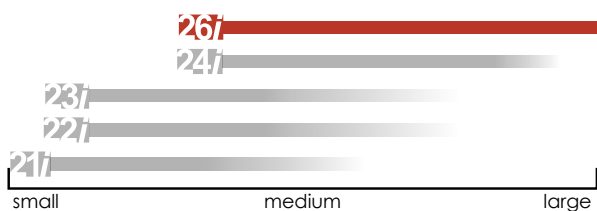
Choosing the right **twenty5i** model for your room size



# twenty5 **26i**



PMC is respected worldwide for its soft-dome mid-range drivers, and the flagship **twenty5.26i**, the largest in the range, features a third driver dedicated to the all-important mid frequencies, where the critical detail is to be found in vocal recordings. The three-way design ensures that each important frequency range has its own dedicated driver, so that the speaker can fill even the largest spaces with absolute transparency and clarity. This is a sublime speaker that can expand with you as you upgrade your system, and bring out the very best in whatever equipment you connect it to.



Choosing the right twenty5i model for your room size





# twenty5 **Ci**



The **twenty5.Ci** is the latest iteration of PMC's full-range centre loudspeaker for surround listening systems. It features twin **g-weave** bass drivers, and the new **twenty5i** treble driver in a package designed to provide the rock-solid centrepiece of an all-enveloping soundstage with the last word in ultra-realistic imaging. Delivering PMC's trademark dynamic range, delicate highs and clean, powerful bass, this speaker's wide, even dispersion allows it to be positioned high or low without affecting the clarity and dramatic impact of movie dialogue, allowing you to realise the full potential of an immersive audio movie playback system without compromising intelligibility.







**twenty5.sub** in Diamond black





The **twenty5.sub** remains the optimum partner for a **twenty5i** series immersive audio system, combining active electronics from PMC's renowned professional systems, 400W Class-D amplification with ultra-low distortion, PMC's proprietary **ATL™** and **Laminair™** technologies, and a pair of the powerful 6.5-inch high-excursion bass drivers used on the **twenty5i** series. This sub can faithfully reproduce frequencies down to 22Hz, and handle dynamic contrasts from the sonic complexity of a Hollywood blockbuster soundtrack to the precision detail of an orchestral performance, with maximum resolution and precision-timed bass.

Using its built-in rear-panel EQ, the sub can be finely tuned to its listening environment, and also perfectly integrated with any accompanying surround or stereo speakers. Together with the compact **twenty5.21i** or **22** speakers, the sub forms a powerful system; the **twenty5.sub** looks after the low frequencies, leaving the left and right speakers to reproduce the mid-range. The result is performance close to that of the three-way **twenty5.26i**, but in a more compact, unobtrusive format.



# AN AUDIO REVOLUTION

The source of PMC's natural, realistic sound is the Advanced Transmission Line (**ATL™**) bass-loading technology, professionally proven all around the world.

**ATL™** uses energy generated by the bass unit in a much more intelligent, efficient way than speaker designs based on ported or sealed boxes. In **ATL™** loudspeakers, the highly braced cabinet is lined with a multitude of custom-designed acoustic materials that absorb all but the very lowest frequencies. These exit from a front-panel vent, extending the low-frequency response, and creating the impression of a far larger speaker with an extra, ultra-high quality bass unit.

**ATL™** improves more than just the bass response; because the low end is clean and clear, it doesn't mask the rest of the music. Vocals, in particular, are beautifully projected and ultra-vivid.

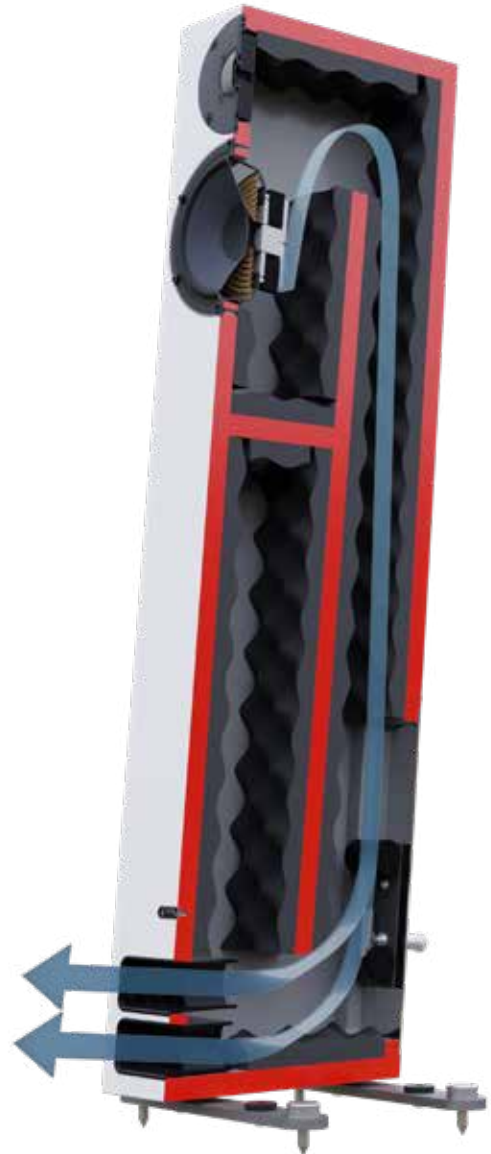
**ATL™** loudspeakers offer another benefit. The **ATL™** bass extension does not change with volume level — so even when listening quietly, the bass sounds balanced and well defined.

## **The Unique Benefits:**

- *More detailed, more natural*
- *Full, rich sound at any volume level*
- *Deeper bass from a smaller cabinet*

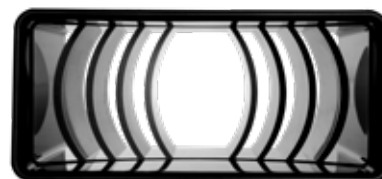
**“No other technology provides such a huge, rich, room-filling sound”**

*“Formula 1 aerodynamic principles applied to the ultimate bass-loading technology.”*

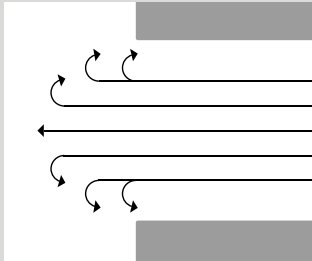


**twenty5.24i** showing **ATL** in cross-section with **Laminair** vent

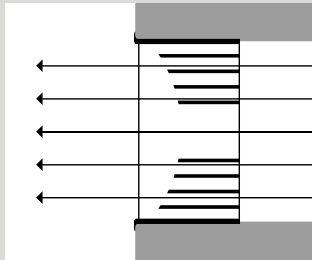
**Laminair** aerodynamic vent



**Standard loudspeaker vent** – slow and turbulent airflow with drag



**The aerodynamic *Laminair* vent** – smooth, rapid and efficient airflow



**The combination of *ATL*<sup>™</sup> and *Laminair* takes audio quality to unparalleled new heights:**

- Faster, cleaner bass and higher-definition sound throughout
- Turbulence is eliminated, increasing the efficiency of the *ATL*<sup>™</sup>
- Removes air noise – only the music remains
- Higher maximum output and bass with supreme timing and dynamics



The **twenty5i** series takes audio performance to the next level by integrating *Laminair* vents into their designs. PMC's Head of Design, Oliver Thomas applied aerodynamic principles he discovered in his previous employment in Formula One to *ATL*<sup>™</sup>, creating an even smoother, laminar airflow at the exit from the transmission line. *ATL*<sup>™</sup> designs involve air moving at high speeds and under pressure, and Oliver showed that reducing turbulence and drag at the *ATL*<sup>™</sup> vent reduces resistance, increases efficiency, eliminates air noise and provides bass with supreme timing and the ultimate dynamic range.

*“Nothing else comes close to the clarity, timing and dynamics”*

# TRIED-AND-TESTED LOW END

PMC put over 25 years of experience into designing and manufacturing the bass driver for the **twenty5** series. The **twenty5i** range features the same high-specification bass units, crafted to produce audio with the maximum possible drive, resolution and detail, and minimum colouration. The driver cone is made from a custom resin-bound, fine-weave glass-fibre composite to ensure maximum rigidity and strength — conventional cones would simply crumple and deform when coupled to the **ATL™** in the cabinet. And yet the driver is ultra-light, so it can respond instantly to changes in dynamics and also remains tonally neutral. With our **ATL™** and **Laminair™** technologies, these drivers allow you to hear your music, not the loudspeaker.





# OPEN, DETAILED & DELICATE

The new **twenty5i** high-frequency driver, a 19mm SONOMEX™ soft-dome design, was derived from the high-frequency unit on PMC's premium fact speaker range; both were co-engineered with respected Norwegian driver manufacturers SEAS. The dome on the **twenty5i** range is mounted in the centre of a large roll surround, an arrangement which gives the effect of two drivers in one; it can produce the wide dispersion of a small-dome driver and the higher output of a larger driver.

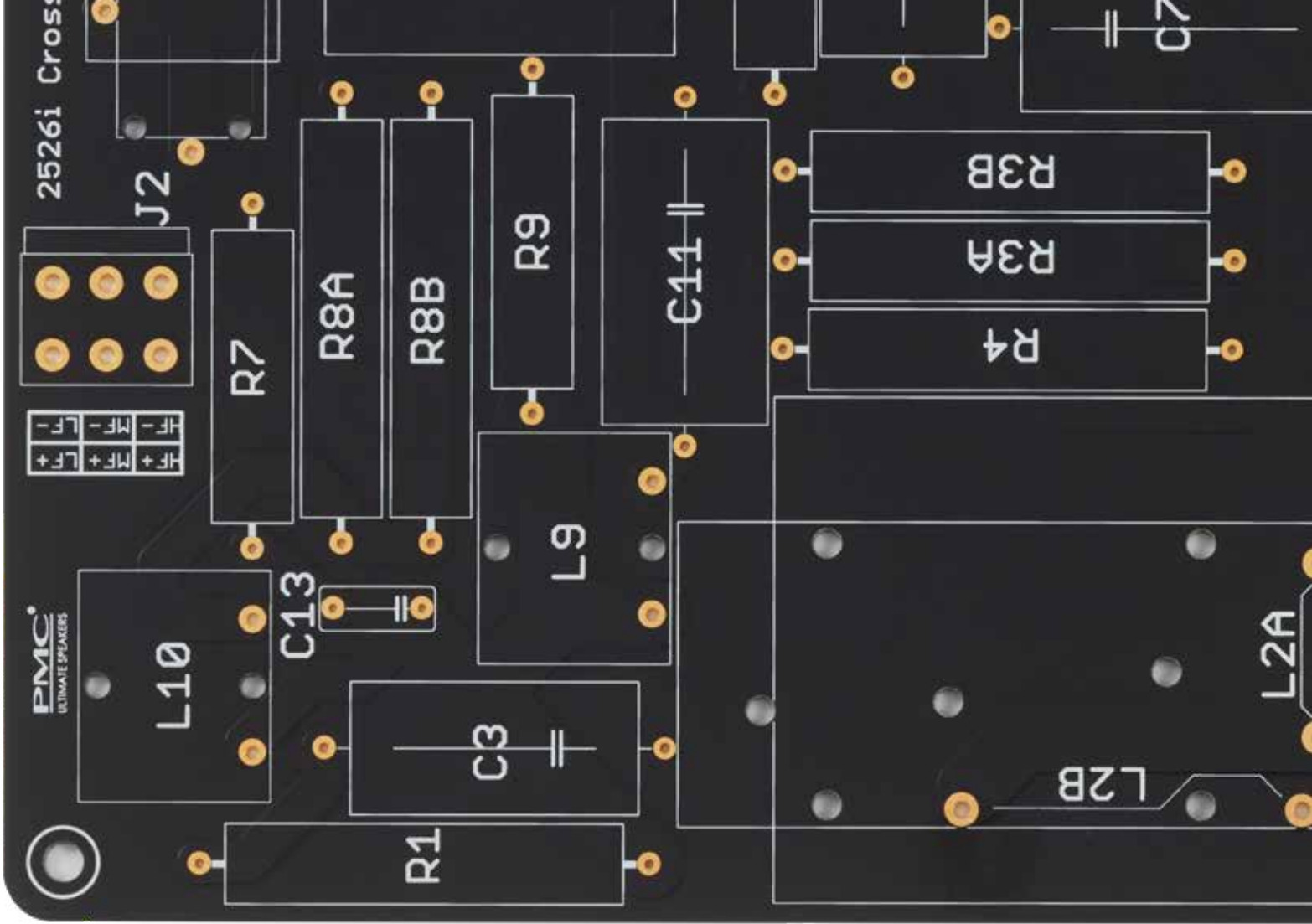
The newly designed ultra-rigid HF dispersion plate and grille enlarge the optimum listening position still further, meaning you can listen from a wide variety of positions in your room and still enjoy PMC's consistent, ultra-detailed sound with razor-sharp imaging.



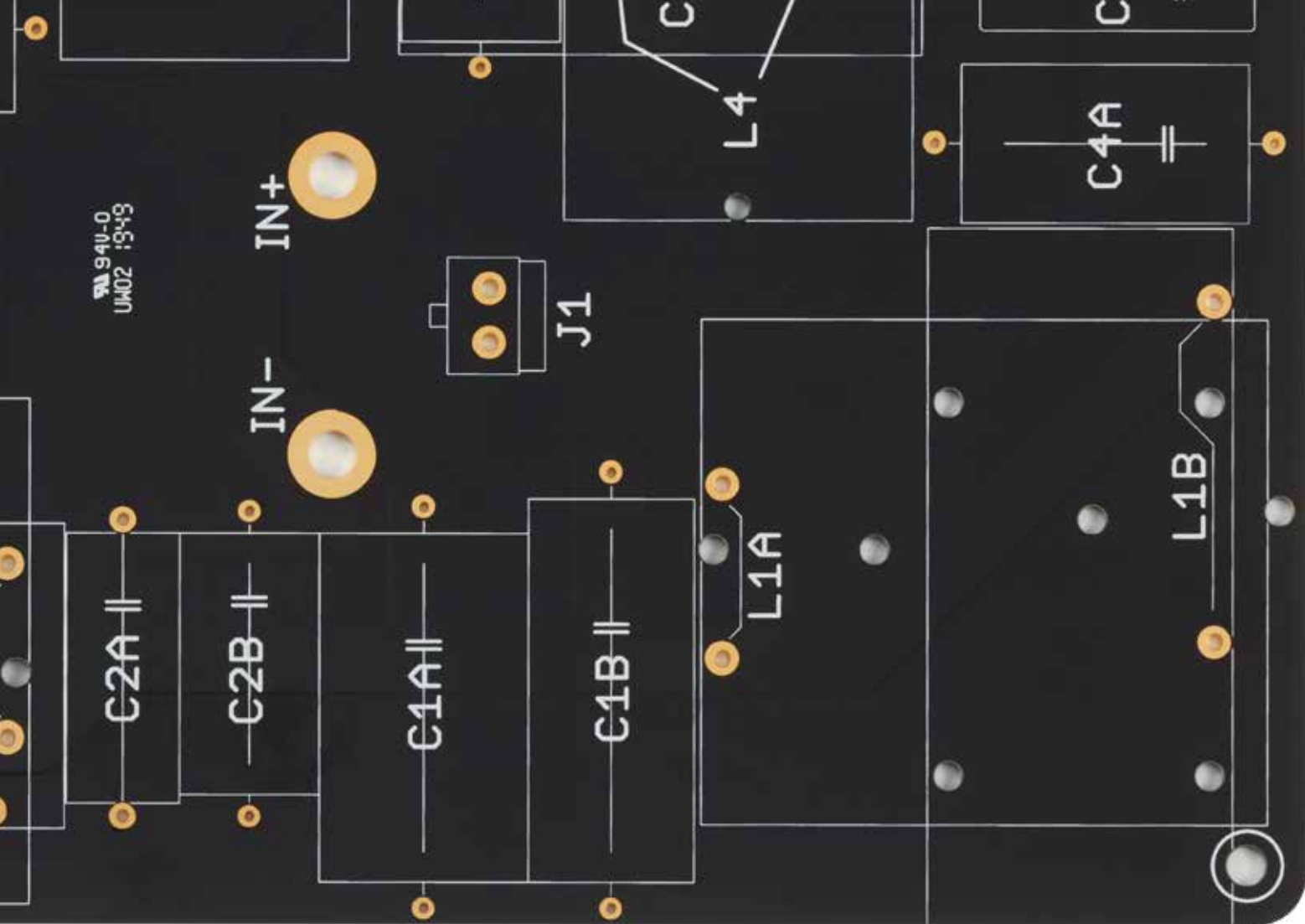
PMC



DIVISION  
WITH  
PRECISION







The crossover is an essential component of any quality loudspeaker, dividing the incoming audio from an amplifier into multiple signals with specific frequency ranges best suited to reproduction by each of the loudspeaker's drive units. During the design of the two-way **twenty5i** speakers, the crossover point where the tweeter hands over to the bass unit was lowered, allowing the LF driver to focus more efficiently on its core frequency range, while making sure the tweeter remains unencumbered by mid-range frequencies. The result is a more consistent, room-filling sound, with a wider sweet spot.

The **twenty5i** models feature sophisticated crossovers with accurate filters mounted on military-grade fibre-glass boards, ensuring that only the ideal frequency range is precisely routed to the correct driver. Thick, pure copper tracks are used to connect the hand-selected crossover components to optimise signal delivery, and even the material of the crossover back plate has been carefully considered. The brushed stainless-steel back panel is also magnetically inert, preventing any adverse interaction with components.

# MORE DETAIL

Our holistic design philosophy means we consider every element of the loudspeaker's design and its effect on performance.

## BINDING POSTS

We design and make our own binding posts for perfect connectivity, machining and plating them with matte rhodium for the best possible conductivity. They are directly coupled to the crossover board to keep the signal path as short as possible.

## GRILLES

The speakers' elegant grilles are magnetically fixed to the cabinet, so there are no unsightly fastenings, and their slim-line profile ensures they have no detrimental effect on the sound of the speakers.

## SPIKES

The custom one-piece stainless-steel spikes thread into the plinth bar for a sure-footed setup.

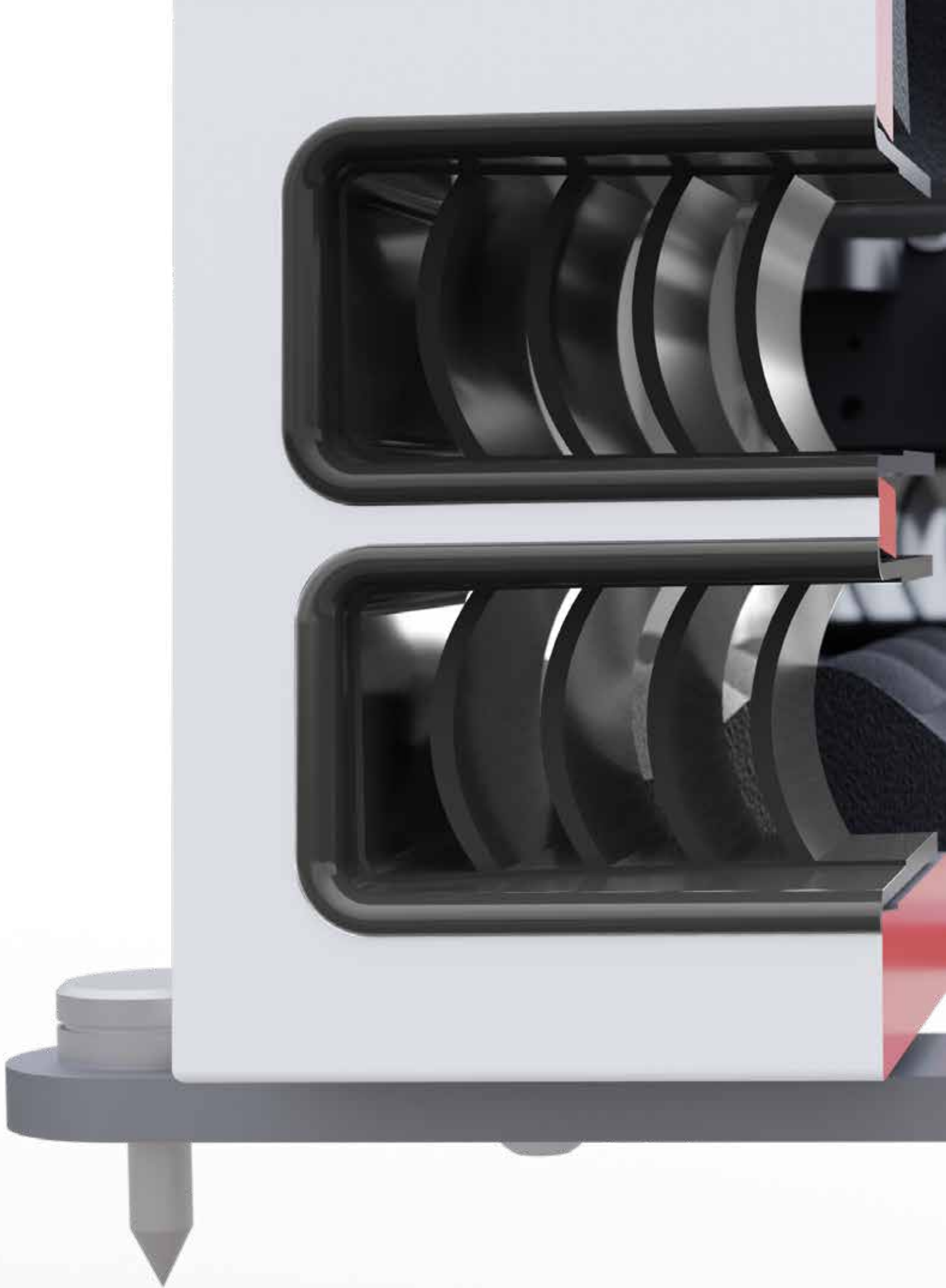


+



-

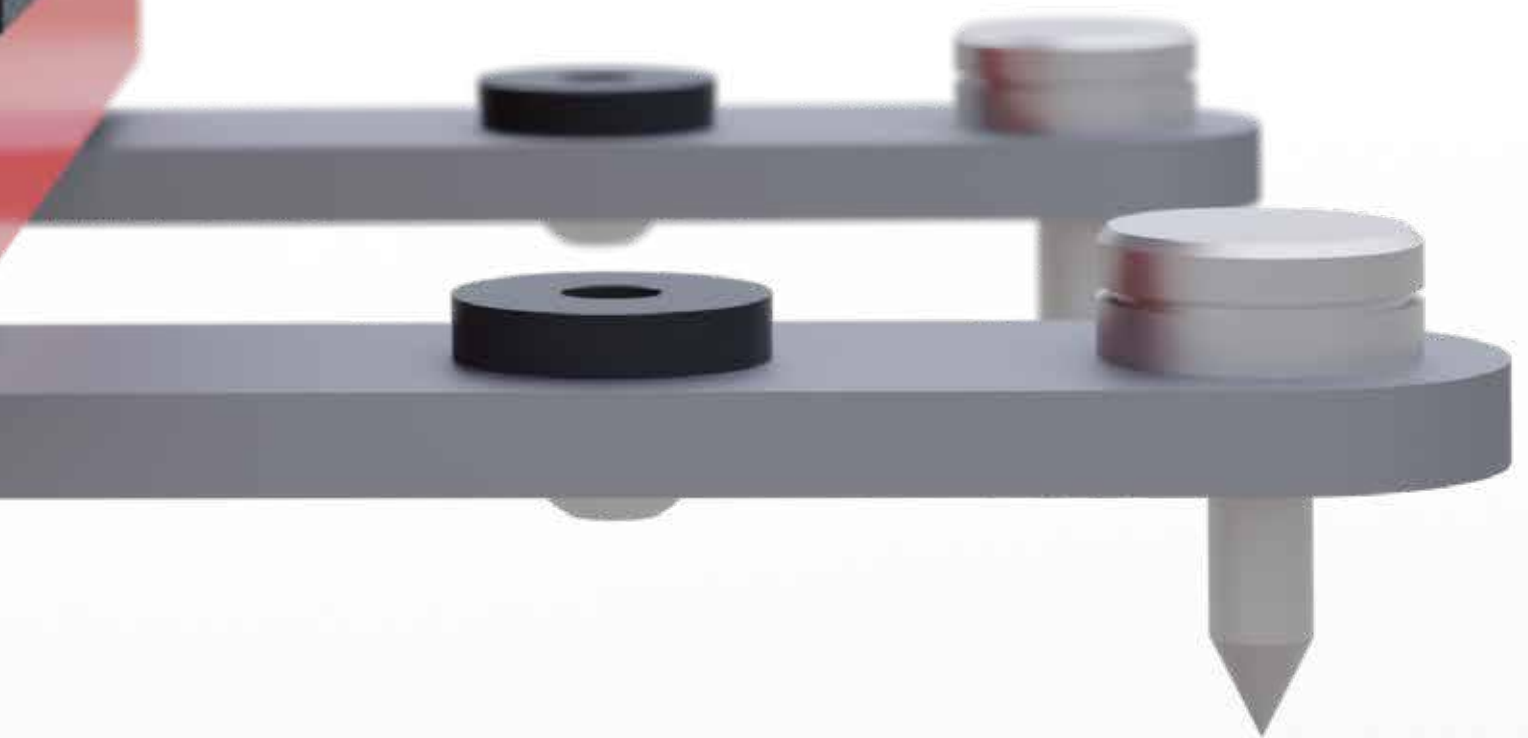




# THE BEST, BAR NONE

During the development of **fenestria**, our flagship model, we established new and innovative ways to analyse vibration and how it affects loudspeakers. We found that if we were to cancel or absorb specific frequencies, we could radically enhance the audio performance and provide even greater levels of realism.

We have applied this knowledge to the **twenty5i** series by adding precision-engineered plinth bars that isolate the speakers from the floor when combined with carefully specified damping materials. Decoupling the loudspeaker in this way prevents unwanted energy being transmitted back to the drive units, so they remain completely focused. Our vibration analysis results show dramatic improvement, but more importantly, the audio picture and definition are truly astounding. Simply put, you hear less loudspeaker and more music.





We know what it takes to make great music. Our loudspeakers feature at every stage of the music-making process.

ONLY PMC  
CAN BRING  
YOU THIS  
CLOSE



# PROUDLY MADE IN THE UK WITH CARE

Our loudspeakers are designed and hand-built with care and attention by fastidious people at the PMC facility in the UK, where every single component is measured and graded. Every detail, from the individual elements on the crossover and in the drive units right up to the cabinet, is tested to ensure it meets our exacting standards for performance and reliability. This ensures each new model is a duplicate of the reference design.

A full computer analysis is taken for each completed loudspeaker, so we know it is technically perfect — but we go one step further. Computers don't tell the full story, and our customers listen with their ears — so we do too. We run a benchmark BBC speech test and play an extensive array of music (including classical, pop and rock) on each loudspeaker we produce. Every one is compared with its reference model and both speakers in each pair are cross-checked to ensure a perfect match. Such is the confidence in our work that we offer an unparalleled 20-year warranty on all passive consumer loudspeakers.



**UNRIVALLED**  
twenty year warranty





**“  
Computers don't tell the full story. As well as a full frequency analysis, we listen to each speaker we make — and run a benchmark BBC speech and musical test on every single one  
”**

## twenty5

<b>Freq response</b>	46Hz - 25kHz
<b>Sensitivity</b>	86.5dB 1W 1m
<b>Rec. amp power</b>	30 - 150W
<b>Effective ATL™</b>	1.72m    5.6ft
<b>Impedance</b>	8 Ohm
<b>Drive units</b>	<b>LF</b> PMC 5.5"/140mm long-throw <b>g-weave™</b> cone with cast alloy chassis <b>HF</b> PMC/SEAS®, 19mm <b>twenty5i</b> series, SONOMEX™ fabric soft dome, Ferrofluid cooled, with 34mm surround and dispersion grille
<b>Crossover freq.</b>	1.7kHz
<b>Input connectors</b>	One pair 4mm binding posts
<b>Dimensions</b>	<b>H</b> 340mm    13.4" <b>W</b> 162mm    6.4" <b>D</b> 284mm    11.2" incl. binding posts (+9mm grille)
<b>Weight</b>	6kg    13.2 lbs ea.
<b>Finishes</b>	Oak, Walnut, Diamond black & Silk white



## twenty5

<b>Freq response</b>	39Hz - 25kHz
<b>Sensitivity</b>	89dB 1W 1m
<b>Rec. amp power</b>	30 - 200W
<b>Effective ATL™</b>	2m    6.5ft
<b>Impedance</b>	8 Ohm
<b>Drive units</b>	<b>LF</b> PMC 6.5"/170mm long-throw <b>g-weave™</b> cone with cast alloy chassis <b>HF</b> PMC/SEAS®, 19mm <b>twenty5i</b> series, SONOMEX™ fabric soft dome, Ferrofluid cooled, with 34mm surround and dispersion grille
<b>Crossover freq.</b>	1.7kHz
<b>Input connectors</b>	One pair 4mm binding posts
<b>Dimensions</b>	<b>H</b> 410mm    16.1" <b>W</b> 192mm    7.6" <b>D</b> 373mm    14.7" incl. binding posts (+9mm grille)
<b>Weight</b>	10kg    22 lbs ea.
<b>Finishes</b>	Oak, Walnut, Diamond black & Silk white



## twenty5 **237**

<b>Freq response</b>	28Hz – 25kHz
<b>Sensitivity</b>	86.5dB 1W 1m
<b>Rec. amp power</b>	30 - 150W
<b>Effective ATL™</b>	2.4m      7.8ft
<b>Impedance</b>	8 Ohm
<b>Drive units</b>	<b>LF</b> PMC 5.5"/140mm long-throw <b>g-weave™</b> cone with cast alloy chassis <b>HF</b> PMC/SEAS®, 19mm <b>twenty5i</b> series, SONOMEX™ fabric soft dome, Ferrofluid cooled, with 34mm surround and dispersion grille
<b>Crossover freq.</b>	1.7kHz
<b>Input connectors</b>	One pair 4mm binding posts
<b>Dimensions</b>	<b>H</b> 907mm      35.7" (+20mm spikes) <b>W</b> 162mm      6.4" (238mm incl. plinth bars) <b>D</b> 330mm      13" (+9mm grille)
<b>Weight</b>	15kg      33 lbs ea.
<b>Finishes</b>	Oak, Walnut, Diamond black & Silk white



## twenty5 **247**

<b>Freq response</b>	27Hz - 25kHz
<b>Sensitivity</b>	89dB 1W 1m
<b>Rec. amp power</b>	30 - 200W
<b>Effective ATL™</b>	3m      9.8ft
<b>Impedance</b>	8 Ohm
<b>Drive units</b>	<b>LF</b> PMC 6.5"/170mm long-throw <b>g-weave™</b> cone with cast alloy chassis <b>HF</b> PMC/SEAS®, 19mm <b>twenty5i</b> series, SONOMEX™ fabric soft dome, Ferrofluid cooled, with 34mm surround and dispersion grille
<b>Crossover freq.</b>	1.7kHz
<b>Input connectors</b>	One pair 4mm binding posts
<b>Dimensions</b>	<b>H</b> 1015mm      40" (+20mm spikes) <b>W</b> 192mm      7.6" (275mm incl. plinth bars) <b>D</b> 419mm      16.5" (+9mm grille)
<b>Weight</b>	23kg      50.6 lbs ea.
<b>Finishes</b>	Oak, Walnut, Diamond black & Silk white



## twenty5

<b>Freq response</b>	27Hz - 25kHz
<b>Sensitivity</b>	86dB 1W 1m
<b>Rec. amp power</b>	50 - 300W
<b>Effective ATL™</b>	3.3m      11ft
<b>Impedance</b>	8 Ohm
<b>Drive units</b>	<b>LF</b> PMC 6.5"/170mm long-throw <b>g-weave™</b> cone with cast alloy chassis <b>MF</b> PMC 50mm chambered soft dome mid-range <b>HF</b> PMC/SEAS®, 19mm <b>twenty5i</b> series, SONOMEX™ fabric soft dome, Ferrofluid cooled, with 34mm surround and dispersion grille
<b>Crossover freq.</b>	400Hz, 4kHz
<b>Input connectors</b>	One pair 4mm binding posts
<b>Dimensions</b>	<b>H</b> 1040mm    40.9" (+20mm spikes) <b>W</b> 192mm      7.6" (275mm incl. plinth bars) <b>D</b> 439mm      17.3" (+15mm grille)
<b>Weight</b>	25kg          55.1 lbs ea.
<b>Finishes</b>	Oak, Walnut, Diamond black & Silk white



## twenty5

<b>Freq response</b>	45Hz - 25kHz
<b>Sensitivity</b>	90dB 1W 1m
<b>Rec. amp power</b>	30 - 200W
<b>Effective ATL™</b>	1.8m          5.9ft
<b>Impedance</b>	6 Ohm
<b>Drive units</b>	<b>LF</b> 2 x PMC 5.5"/140mm long-throw <b>g-weave™</b> cone with cast alloy chassis <b>HF</b> PMC/SEAS®, 19mm <b>twenty5i</b> series, SONOMEX™ fabric soft dome, Ferrofluid cooled, with 34mm surround and dispersion grille
<b>Crossover freq.</b>	1.7kHz
<b>Input connectors</b>	One pair 4mm binding posts
<b>Dimensions</b>	<b>H</b> 174mm      6.9" <b>W</b> 554mm     21.8" <b>D</b> 314mm      12.4" incl. binding posts (+9mm grille)
<b>Weight</b>	11kg          24.3 lbs ea.
<b>Finishes</b>	Oak, Walnut, Diamond black & Silk white



# twenty5

<b>Freq response</b>	22Hz - 200Hz
<b>Effective ATL™</b>	3m      9.8ft
<b>Drive units</b>	<b>LF</b> 2 x PMC 6.5"/170mm long-throw <b>g-weave™</b> cone with cast alloy chassis
<b>Input connectors</b>	2 x balanced analogue (left/right XLR female) (RCA unbalanced adapter provided) 1 x AES digital XLR female (accepts 32 -192kHz, 24bit)
<b>Output connectors</b>	2 x balanced analogue (left/right XLR male) 1 x AES output XLR (male) NB: Both analogue and digital outputs are active regardless of source
<b>Mains power</b>	IEC connector 90-132V / 180-264V AC auto-sensing
<b>Amplifier power</b>	400Wrms Class-D
<b>User controls</b>	1 x Parametric EQ - Gain: -8.00 to +8dB - Freq: 20Hz-150Hz - Q: 1 to 8 in 0.5 Selectable LF rolloff slope: off (6dB/Oct, 12dB/Oct, 18dB/Oct) Selectable LF rolloff frequency points: 50Hz, 80Hz, 120Hz, 150Hz, 200Hz +10dB Gain: off/on Phase reverse: off/on Phase: 0-80 degrees in 5-degree steps
<b>Volume range</b>	-48.5dB to +15dB
<b>Dimensions</b>	<b>H</b> 587mm      23.1" (+20mm spikes) <b>W</b> 200mm      7.9" (274mm incl. plinth bars) <b>D</b> 516mm      20.3" (+9mm grille)
<b>Weight</b>	25kg      55.1 lbs ea.
<b>Finish</b>	Diamond black
<b>Warranty</b>	5 years



twenty5i, Laminair and g-weave are trade marks of The Professional Monitor Company Limited

The Emmy name and the Emmy statuette are the trademarked property of The Academy of Television Arts & Sciences and the National Academy of Television Arts & Sciences

This document should not be construed as a commitment on the part of The Professional Monitor Company Limited. The Professional Monitor Company Limited will not assume responsibility for errors that may appear in this document. Information may be subject to change.

# THE FINISH

Keeping pace with current interior design trends, the **twenty5i** series is available in a lustrous diamond black and a variety of silk finishes, including white and two different natural timbers\*, hand-selected from sustainable sources — so the speaker looks as elegant as it sounds.

\* **twenty5.sub** available exclusively in Diamond black



Oak

Walnut

Diamond black

White silk





**PMC**<sup>®</sup>

PMC stock code 17091/Item no. 1085/Feb@2020

**THE PROFESSIONAL MONITOR COMPANY LIMITED**  
Holme Court Biggleswade SG18 9ST UK  
T +44 (0)1767 686300

E sales@pmc-speakers.com W www.pmc-speakers.com